



# DO YOU KNOW THE DIFFERENCE?

## Bowfin



Pelvic fins set back from gills and pectoral fins

Short anal fin

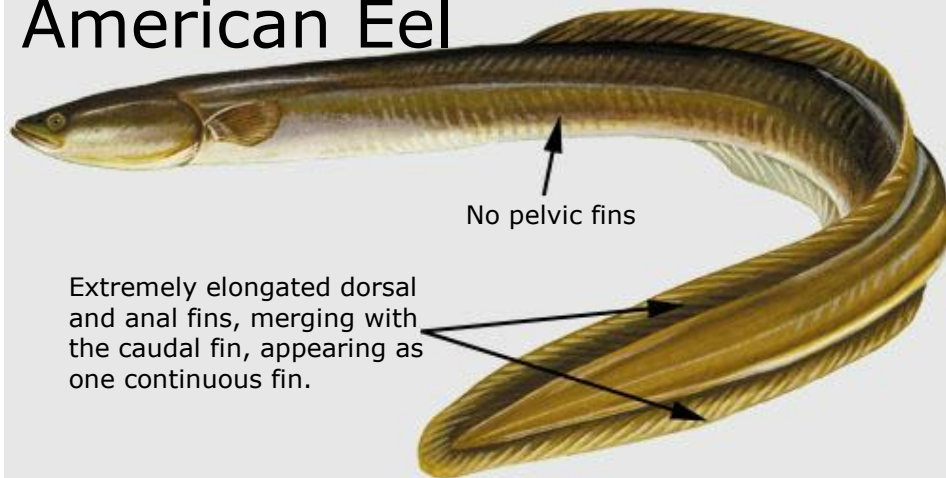
## Northern Snakehead



Pelvic fins close to pectoral fins and gills

Extended anal fin

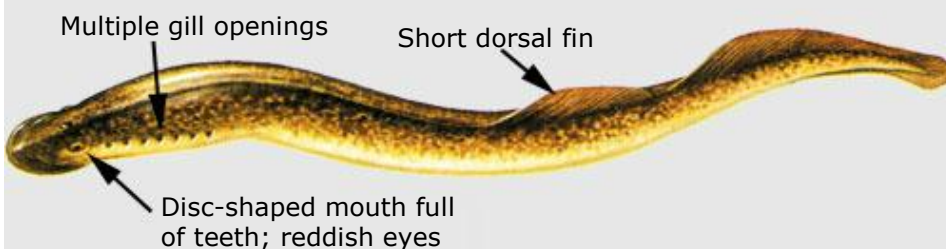
## American Eel



No pelvic fins

Extremely elongated dorsal and anal fins, merging with the caudal fin, appearing as one continuous fin.

## Sea Lamprey



Multiple gill openings

Short dorsal fin

Disc-shaped mouth full of teeth; reddish eyes

Photos: USFWS/D. Raver; USGS/NAS